

CHOICE

ALLOY, CARBON, STAINLESS STEEL PIPE, FITTINGS AND FLANGES

Whether you need seamless or welded, we offer the choices to meet your demands. That's why Federal Steel Supply offers an incredible selection of carbon, alloy and stainless steel pipe, fittings and flanges – 30 complete product lines with over 4,000 individual part numbers:

- All available on a same day basis
- Seamless pipe and products to 36 inch O.D.
- Welded pipe and products to 60 inch O.D.
- Scheduled and non-scheduled heavy-wall products
- Materials inventoried to API, ASTM, ASME, NACE, DIN, AISI, AWWA and MSS Specifications

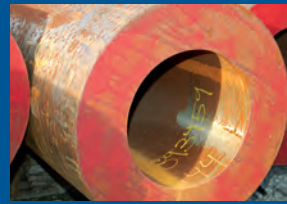
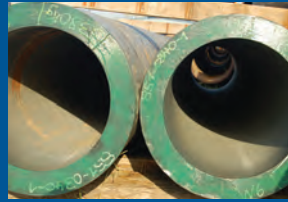


DEPENDABLE

SPECIALIZING IN AFTER HOURS AND WEEKEND SERVICE

Time is money and we know your production needs and schedule can't wait. That's why Federal Steel Supply maintains complete flexibility in meeting your delivery schedules by providing after-hours and weekend service ... everyday.

FEDERAL STEEL SUPPLY



FEDERAL STEEL SUPPLY



EXPERIENCE

MEETING THE EXACT NEEDS OF EVERY INDUSTRY THAT USES PIPE

Every industry has its unique set of material specifications and needs. That's why you can count on the exceptional experience and industry knowledge of the professionals at Federal Steel Supply. The following is a sample listing of the industries we serve:

- **POWER GENERATION:** New construction and repair, planned or emergency outages.
- **OIL AND GAS:** Production, transmission and refining.
- **MANUFACTURING:** Heavy equipment manufacturers, steel and paper mills, HRSG and pressure vessel fabricators.
- **FABRICATION AND CONSTRUCTION:** Pipe Fabricators & Shipbuilders. Construction of Offshore Platforms, Dams, Tunnels, Bridges, Refineries and Processing plants.

Call Anytime 24/7:
800-325-1584
636-537-2393

SERVICE

VALUE-ADDED SERVICES YOU DEMAND

Federal Steel Supply is your partner for innovative, value-added services that meet your exact requirements.

- Production saw cutting
- Flame cutting
- Part marking, Bar coding
- X-Ray, Ultrasonic Testing
- Independent, supplemental testing
- I.D. and O.D. coatings
- Shipping 7 days a week via air, sea or land

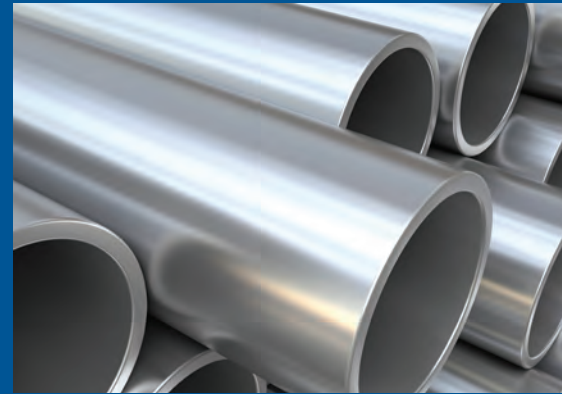
Call Anytime 24/7:
800-325-1584
636-537-2393

Corporate Sales Office
747 Goddard Avenue, Chesterfield, MO 63005

Houston, TX Processing Center
8003 Miller Rd #2, Houston, TX 77049

Fax: 636-537-8795
www.fedsteel.com

A WORLD OF PIPE, FITTINGS & FLANGES ... DELIVERED WORLDWIDE.



Federal Steel Supply is one of the largest stocking distributors of carbon steel and chrome-moly tubular products in the United States. We offer 30 complete product lines with over 4,000 individual parts, all with complete traceability from the manufacturer.

Federal Steel Supply is located in St. Louis, Missouri and Houston, Texas. We are well positioned to service both domestically and internationally. With same day access to the port of Houston or Houston International Airport we can help you meet your crucial delivery schedules.

Federal Steel Supply maintains over 10 acres of inventory to satisfy your requirements. Our entire inventory of seamless and welded pipe is manufactured to specifications by ASME, ASTM, API, ANSI, DIN and AWWA, as well as the fittings and flanges to match.

Federal Steel Supply maintains real-time inventory management, full mill documentation and continuous quality control to make your project procurements smoother and more cost effective.

CARBON PIPE & TUBE

- Seamless and welded products
- Size range; ½ inch nominal through 60 inch O.D.
- Wall thickness up through 4 inch thick
- Specifications and Grades
 - SA-106 Grade B/C
 - SA-333, Grade 1/6
 - API 5L-B and X-Grades through X-80
 - SA-53 Grade B
 - A-519 1020/1026
 - A-513 Type 5 (DOM)
 - Rolled and welded A-671 and A-672

ALLOY PIPE & TUBE

- Seamless and welded products
- Size range; ½ inch nominal through 60 inch O.D.
- Wall thickness up through 4 inch thick
- Specifications and Grades
 - SA-335 P5, P9, P11, P22, P91
 - SA-213 T5, T9, T11, T22, T91
 - A-519 4130/4142
 - Rolled and welded A-691

STAINLESS STEEL PIPE & TUBE

- Seamless and welded products
- Size range; ¼ inch nominal through 36 inch O.D.
- Wall thickness up through 1.500 inch thick
- Specifications and Grades
 - SA-312, SA-276, SA-213
 - Grades: 304, 310, 316, 321, 347
 - Grades also available in L and H

FITTINGS & FLANGES

- Seamless and welded, X-rayed products
- Available in carbon, high-yield, chrome-moly and stainless steel
- Size range; ¼ inch through 48 inch O.D.
- Schedules: 10 through XXH and heavier
- Specifications and Grades
 - SA-182, SA-234, SA-105
 - Grades WPB, WPC, WP11, WP22, WP91, Y42 through Y65
- Materials inventoried to API, ASTM, ASME, NACE, DIN, AISI and MSS specifications